

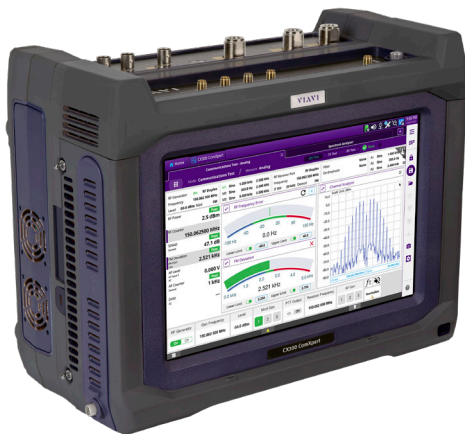
Flyer

# VIAVI

## CX300 ComXpert

A complete communications test solution capable of testing everything from portable radios, to complex infrastructure, to broadband networks.

The CX300 ComXpert is a comprehensive communications service monitor solution providing today's radio technicians with an easy to use instrument for most maintenance needs. With a small and ruggedized form factor, the one-of-a-kind CX300 delivers lab grade specifications in a field portable package. Experience a whole new level of radio testing with the CX300.



### Features

- Frequency range from 100 kHz to 6 GHz
- Multiple tab user interface, similar to an internet browser
- Intelligent color-coded meters for at-a-glance test verification
- VIAVI Auto-Test applications for all major LMR and PMR radios\*
- VIAVI StrataSync integration offers asset, configuration, and test data management
- Remotely control the test set using Windows, Android, and iOS with Smart Access Anywhere

### Future Features

- Built-in two port Vector Network Analyzer with cable and antenna analysis and S-parameter measurements
- LTE Over-The-Air analysis for testing both radio and broadband network infrastructure

**4TECT**

ООО «4ТЕСТ»

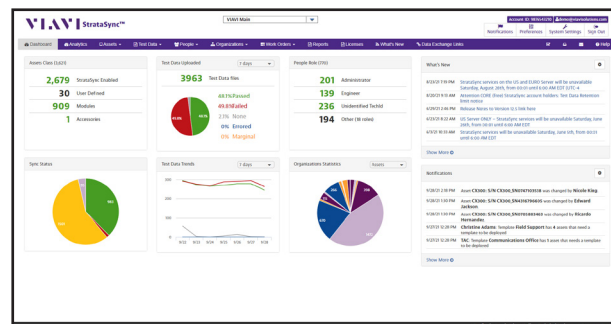
Телефон: +7 (499) 685-4444

info@4test.ru

www.4test.ru

The CX300 offers a large color touchscreen with an innovative user interface. Multiple tabs allow you to instantly switch between test setups without having to reload settings. The unique user interface is similar to an internet browser with the ability to switch between tests with a push of a button.

The user interface also provides intelligent color-coded meters. These meters resemble swept analog meters while also providing a digital readout. Individual and overall pass or fail flags further simplify your go / no-go testing.



StrataSync Dashboard

## Ordering Information

Order Number	Description
CX300	CX300 ComXpert Communications Test Set (3 GHz)

## Options

CX300-F6GHZ	6 GHz Frequency Extension
CX300-DP25P1	P25 Conventional (Phase 1)
CX300-DP25P2	P25 Phase II

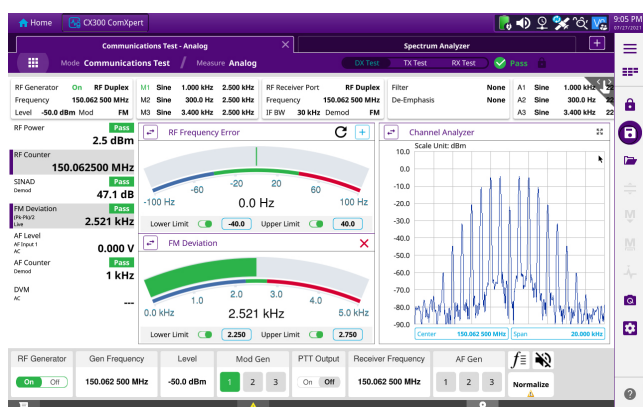
## Auto-Test and Alignment

### P25 Radios

CX300-TPHXL	Harris XL Series*
CX300-TPHP25	Harris P25 Series (P7300, M7300, P5500, XG-75)*
CX300-TPKV	Kenwood Viking Series*
CX300-TPMA	Motorola APX Series*
CX300-TPMA25	Motorola ASTRO 25 XTS / XTL Series*
CX300-TPTPM	Tait P25 Series (Test Only)*

## Recommended Accessories

CX300-AANT1	Antenna Kit, 1 GHz
CX300-ABAT	Internal Battery, 98 Watt-Hour, Lithium-Ion
CX300-ACBL	RF Cable for AutoAlignment
CX300-ACH	Carrying Case, Hard Transit
CX300-ACS	Carrying Case, Soft



Color-Coded Meters

The legendary suite of VIAVI automated test and alignment applications is an option on the CX300. Trusted by radio manufacturers and service centers worldwide, these Auto-Test applications perform fast, repeatable, and accurate test and alignment matching the specific OEM's maintenance specifications.

Easily save and access test results for both manual and automated tests with VIAVI StrataSync. StrataSync is a cloud-based solution that provides asset configuration and test data management from anywhere in the world. The addition of wireless technology in the CX300 lightens your workload by uploading test results to the cloud or updating your test set with the latest software.